

MANTOVA PORCELAIN TILE



MANTOVA PORCELAIN TILE



3' x 13' MANTOVA IVORY BULLNOSE
63-500



3' x 10' MANTOVA IVORY BULLNOSE
56-068



13' x 13' MANTOVA IVORY PORCELAIN TILE
63-248



10' x 16' MANTOVA IVORY WALL TILE
56-034



2' x 2' MANTOVA IVORY MOSAICS
63-436



3.25' x 6.5' MANTOVA IVORY
61-075

MANTOVA PORCELAIN TILE



3' x 13' MANTOVA CLASSICO BULLNOSE
63-502



3' x 10' MANTOVA CLASSICO BULLNOSE
56-070



13' x 13' MANTOVA CLASSICO PORCELAIN TILE
63-252



10' x 16' MANTOVA CLASSICO WALL TILE
56-038



2' x 2' MANTOVA CLASSICO MOSAICS
63-438



3.25' x 6.5' MANTOVA CLASSICO
61-077

MANTOVA PORCELAIN TILE



3' x 13' MANTOVA WALNUT BULLNOSE
63-501



3' x 10' MANTOVA WALNUT BULLNOSE
56-069



13' x 13' MANTOVA WALNUT PORCELAIN TILE
63-250



10' x 16' MANTOVA WALNUT WALL TILE
56-036



2' x 2' MANTOVA WALNUT MOSAICS
63-437

MANTOVA PORCELAIN TILE



3" x 13" MANTOVA LAVA BULLNOSE
63-504



3" x 10" MANTOVA LAVA BULLNOSE
56-072



13" x 13" MANTOVA LAVA PORCELAIN TILE
63-256



10" x 16" MANTOVA LAVA WALL TILE
56-042



2" x 2" MANTOVA LAVA MOSAICS
63-440



3.25" x 6.5" MANTOVA LAVA
61-079

MANTOVA PORCELAIN TILE



3' x 13' MANTOVA ANTHRACITE BULLNOSE
63-503



3' x 10' MANTOVA ANTHRACITE BULLNOSE
56-071



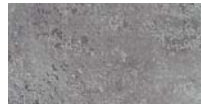
13' x 13' MANTOVA ANTHRACITE PORCELAIN TILE
63-254



10' x 16' MANTOVA ANTHRACITE WALL TILE
56-040



2' x 2' MANTOVA ANTHRACITE MOSAICS
63-439



3.25' x 6.5' MANTOVA ANTHRACITE
61-078

MANTOVA PORCELAIN TILE

PACKAGING INFORMATION

DESCRIPTION	ITEM CODE					LBS/BOX	PCS/BOX	SQFT/BOX	BOXES/SKID	SQFT/SKID
	IVORY	WALNUT	CLASSICO	ANTHRACITE	LAVA					
13" x 13" MANTOVA PORCELAIN	63-248	63-250	63-252	63-254	63-256	44.96	11	12.91	58	748.90
10" x 16" MANTOVA WALL TILE	56-034	56-036	56-038	56-040	56-042	30.92	10	10.76	72	774.72
3.25" x 6.5" MANTOVA PORCELAIN	61-075	n/a	61-077	61-078	61-079	37.44	72	10.76	76	817.76
3" x 10" MANTOVA BULLNOSE	56-068	56-069	56-070	56-071	56-072	15.60	25	n/a	98	2450 pcs.
3" x 13" MANTOVA BULLNOSE	63-500	63-501	63-502	63-503	63-504	20.71	21	n/a	84	1764 pcs.
2" x 2" MANTOVA MOSAICS	63-436	63-437	63-438	63-439	63-440	39.08	10	11.74	48	563.52

GENERAL SPECIFICATIONS

DESCRIPTION	METHOD	UNIT	3.25" x 6.5"	13" x 13"	18" x 18"
THICKNESS		mm – in	7.6 mm – 5/16"	7.6 mm – 5/16"	8.7 mm – 11/32"
WATER ABSORPTION	EN ISO 10545-3	(%)	≤ 0.5	≤ 0.5	≤ 0.5
ABRASION RESISTANCE	EN ISO 10545-7	(PEI)	4	4	3
SCRATCH HARDNESS		(Mohs)	7	7	6
BREAKING STRENGTH	EN ISO 10545-4	(lbf)	≥ 300	≥ 300	≥ 300
CHEMICAL RESISTANCE	EN ISO 10545-13	(GL)	Class A – Res.	Class A – Res.	Class A – Res.
FROST RESISTANCE	EN ISO 10545-12		Resistant	Resistant	Resistant
STATIC COEFFICIENT OF FRICTION (WET)	ASTM C-1028	(μ)	≥ 0.70	≥ 0.70	≥ 0.70
STATIC COEFFICIENT OF FRICTION (DRY)	ASTM C-1028	(μ)	≥ 0.80	≥ 0.80	≥ 0.80
DCOF (WET)	ANSI B101.3		≥ 0.42	≥ 0.42	≥ 0.42
SHADE VARIATION			V2	V2	V2